

PTRA083818NF

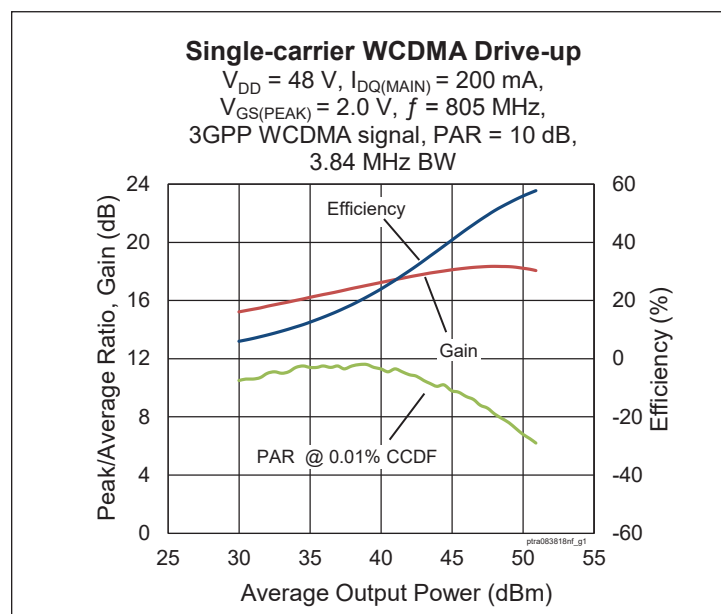
Thermally-Enhanced High Power RF LDMOS FET 275 W, 48 V, 733 – 805 MHz

Description

The PTRA083818NF is a 275-watt LDMOS FET intended for use in multi-standard cellular power amplifier applications in the 733 to 805 MHz frequency band. Features include input matching, high gain and thermally-enhanced package with earless flanges. Manufactured with Wolfspeed's advanced LDMOS process, this device provides excellent thermal performance and superior reliability.



PTRA083818NF
Package PG-HBSOF-6-2



Features

- Broadband internal input matching
- Asymmetrical Doherty design
 - Main : $P_{1dB} = 165\text{ W Typ}$
 - Peak : $P_{1dB} = 250\text{ W Typ}$
- Typical Pulsed CW performance, 805 MHz, 48 V, combined outputs
 - Output power at $P_{1dB} = 275\text{ W}$
 - Efficiency = 59.6%
 - Gain = 18.6 dB
- Capable of handling 10:1 VSWR @ 48 V, 81.3 W CW output power
- Integrated ESD protection
- Human Body Model class 1C (per ANSI/ESDA/ JEDEC JS-001)
- Low thermal resistance
- Pb-free and RoHS compliant

RF Characteristics

Single-carrier WCDMA Specifications (tested in Wolfspeed Doherty production test fixture)

$V_{DD} = 48\text{ V}$, $I_{DQ} = 200\text{ mA}$, $V_{GS(PEAK)} = 2.0\text{ V}$, $P_{OUT} = 81.3\text{ W avg}$, $f = 805\text{ MHz}$, 3GPP signal, channel bandwidth = 3.84 MHz, peak/average = 10 dB @ 0.01% CCDF

Characteristic	Symbol	Min	Typ	Max	Unit
Linear Gain	G_{ps}	17.2	18	—	dB
Drain Efficiency	η_D	53	56	—	%
Adjacent Channel Power Ratio	ACPR	—	-27.3	-24	dBc
Output PAR @ 0.01% CCDF	OPAR	5.5	6.3	—	dB

All published data at $T_{CASE} = 25^\circ\text{C}$ unless otherwise indicated

ESD: Electrostatic discharge sensitive device—observe handling precautions!

DC Characteristics

Characteristic	Conditions	Symbol	Min	Typ	Max	Unit
Drain-Source Breakdown Voltage	$V_{GS} = 0\text{ V}$, $I_{DS} = 10\text{ mA}$	$V_{(BR)DSS}$	105	—	—	V
Drain Leakage Current	$V_{DS} = 48\text{ V}$, $V_{GS} = 0\text{ V}$	I_{DSS}	—	—	1	μA
	$V_{DS} = 105\text{ V}$, $V_{GS} = 0\text{ V}$	I_{DSS}	—	—	10	μA
Gate Leakage Current	$V_{GS} = 10\text{ V}$, $V_{DS} = 0\text{ V}$	I_{GSS}	—	—	1	μA
On-State Resistance (Main)	$V_{GS} = 10\text{ V}$, $V_{DS} = 0.1\text{ V}$	$R_{DS(on)}$	—	0.12	—	Ω
On-State Resistance (Peak)	$V_{GS} = 10\text{ V}$, $V_{DS} = 0.1\text{ V}$	$R_{DS(on)}$	—	0.08	—	Ω
Operating Gate Voltage (Main)	$V_{DS} = 48\text{ V}$, $I_{DQ} = 0.20\text{ A}$	V_{GS}	3	3.5	4	V
Operating Gate Voltage (Peak)	$V_{DS} = 48\text{ V}$, $I_{DQ} = 0\text{ mA}$	V_{GS}	—	2	—	V

Maximum Ratings

Parameter	Symbol	Value	Unit
Drain-Source Voltage	V_{DSS}	105	V
Gate-Source Voltage	V_{GS}	-6 to +12	V
Operating Voltage	V_{DD}	0 to +55	V
Junction Temperature	T_J	225	$^{\circ}\text{C}$
Storage Temperature Range	T_{STG}	-65 to +150	$^{\circ}\text{C}$

1. Operation above the maximum values listed here may cause permanent damage. Maximum ratings are absolute ratings; exceeding only one of these values may cause irreversible damage to the component. Exposure to absolute maximum rating conditions for extended periods may affect device reliability. For reliable continuous operation, the device should be operated within the operating voltage range (V_{DD}) specified above.

2. Parameters values can be affected by end application and product usage. Values may change over time.

Thermal Characteristics

Parameter	Symbol	Value	Unit
Thermal Resistance (Main, $T_{CASE} = 70^{\circ}\text{C}$, 81.3 W CW)	$R_{\theta JC}$	0.53	$^{\circ}\text{C/W}$

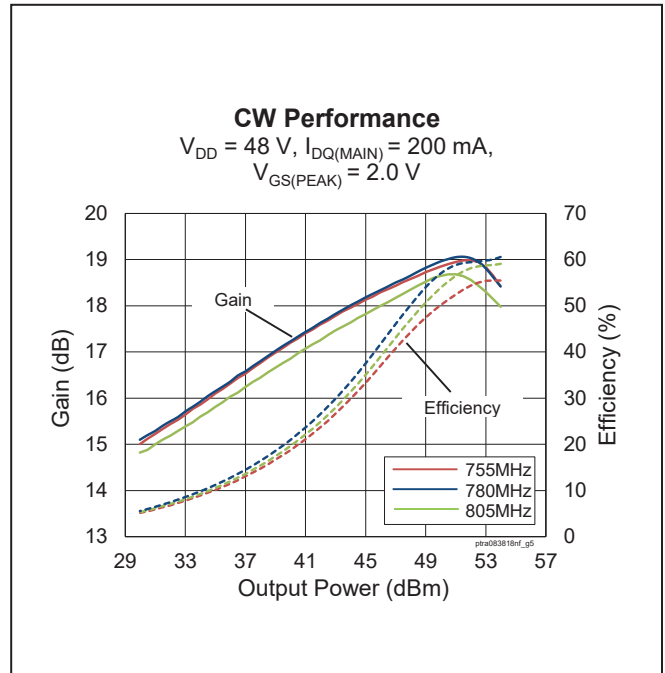
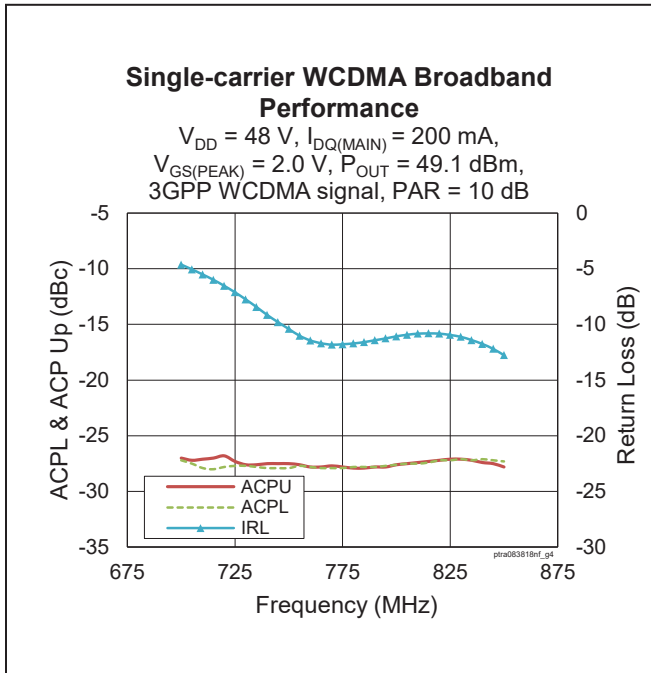
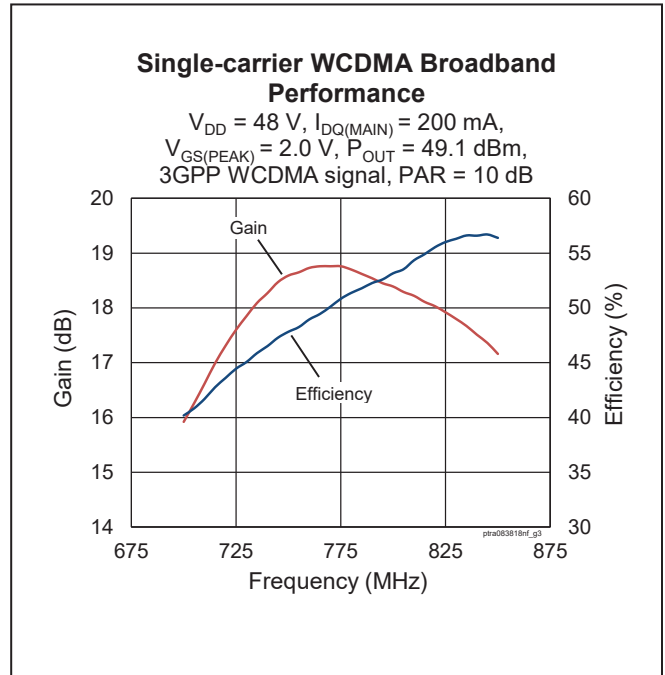
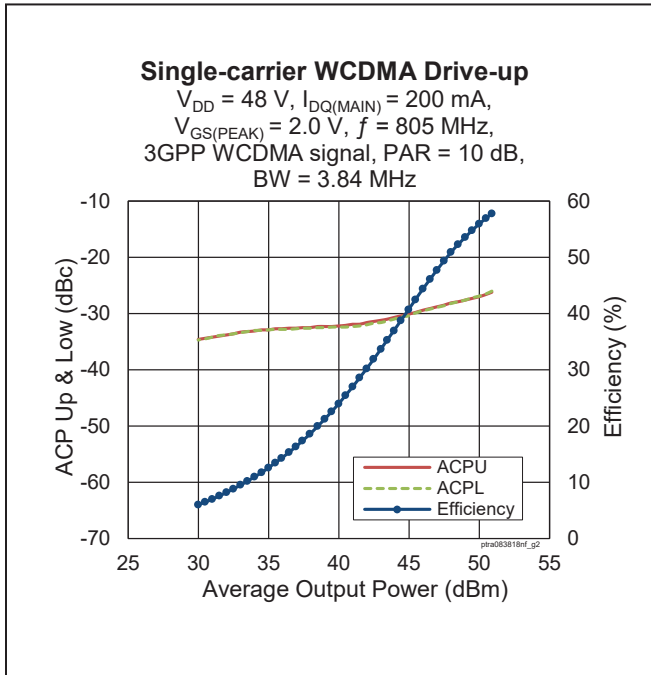
Moisture Sensitivity Level

Level	Test Signal	Package Temperature	Unit
3	IPC/JEDEC J-STD-020	260	$^{\circ}\text{C}$

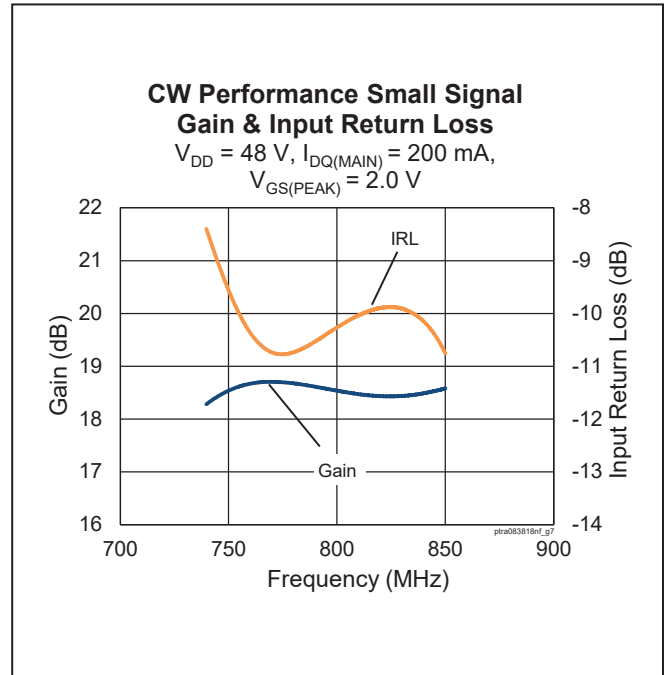
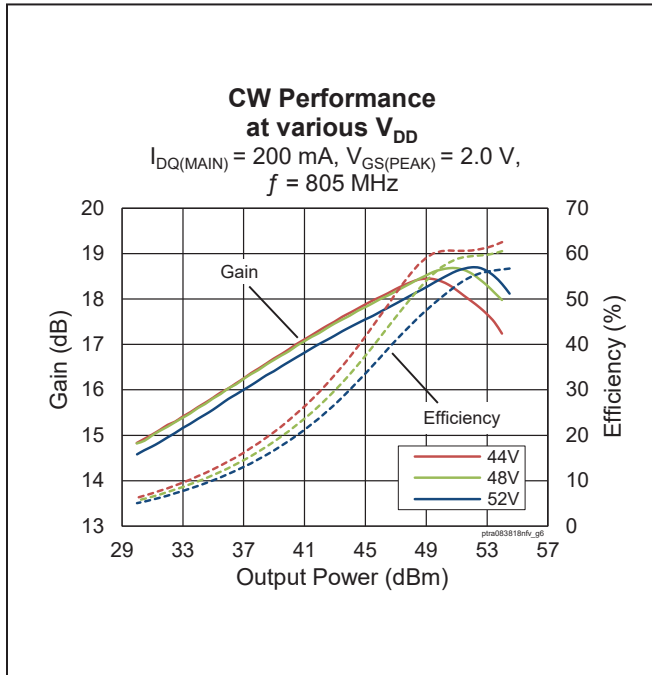
Ordering Information

Type and Version	Order Code	Package Description	Shipping
PTRA083818NF V1 R5	PTRA083818NF-V1-R5	PG-HBSOF-6-2	Tape & Reel, 500 pcs

Typical RF Performance (data taken in production test fixture)



Typical RF Performance (cont.)



Load Pull Performance

Main Side Load Pull Performance – Pulsed CW signal: 10 μ s, 10% duty cycle, 48 V, I_{DQ} = 350 mA, class AB

		P _{1dB}									
		Max Output Power					Main Drain Efficiency				
Freq [MHz]	Z _s [Ω]	Z _l [Ω]	Gain [dB]	P _{1dB} [dBm]	P _{1dB} [W]	η D [%]	Z _l [Ω]	Gain [dB]	P _{1dB} [dBm]	P _{1dB} [W]	η D [%]
760	1.8-j4.86	2.45-j0.78	20.9	53.30	212	62.0	5.91+j0.63	22.8	51.50	143	73.9
780	1.93-j4.84	2.54-j1.0	21.1	53.10	203	61.0	5.37+j1.07	22.9	51.50	140	73.6
805	2.25-j5.8	2.63-j0.92	21.2	53.10	203	62.7	4.60+j0.86	22.6	51.80	150	73.1

		P _{3dB}									
		Max Output Power					Main Drain Efficiency				
Freq [MHz]	Z _s [Ω]	Z _l [Ω]	Gain [dB]	P _{3dB} [dBm]	P _{3dB} [W]	η D [%]	Z _l [Ω]	Gain [dB]	P _{3dB} [dBm]	P _{3dB} [W]	η D [%]
760	1.8-j4.86	2.53-j1.19	19.1	54.00	253	65.0	4.48-j0.68	20.4	53.20	208	74.8
780	1.93-j4.84	2.64-j1.16	19.3	53.90	243	65.0	5.69+j0.29	21	52.10	162	73.8
805	2.25-j5.8	2.56-j1.21	19.4	53.90	243	66.0	4.88+j0.44	21	52.30	171	74.9

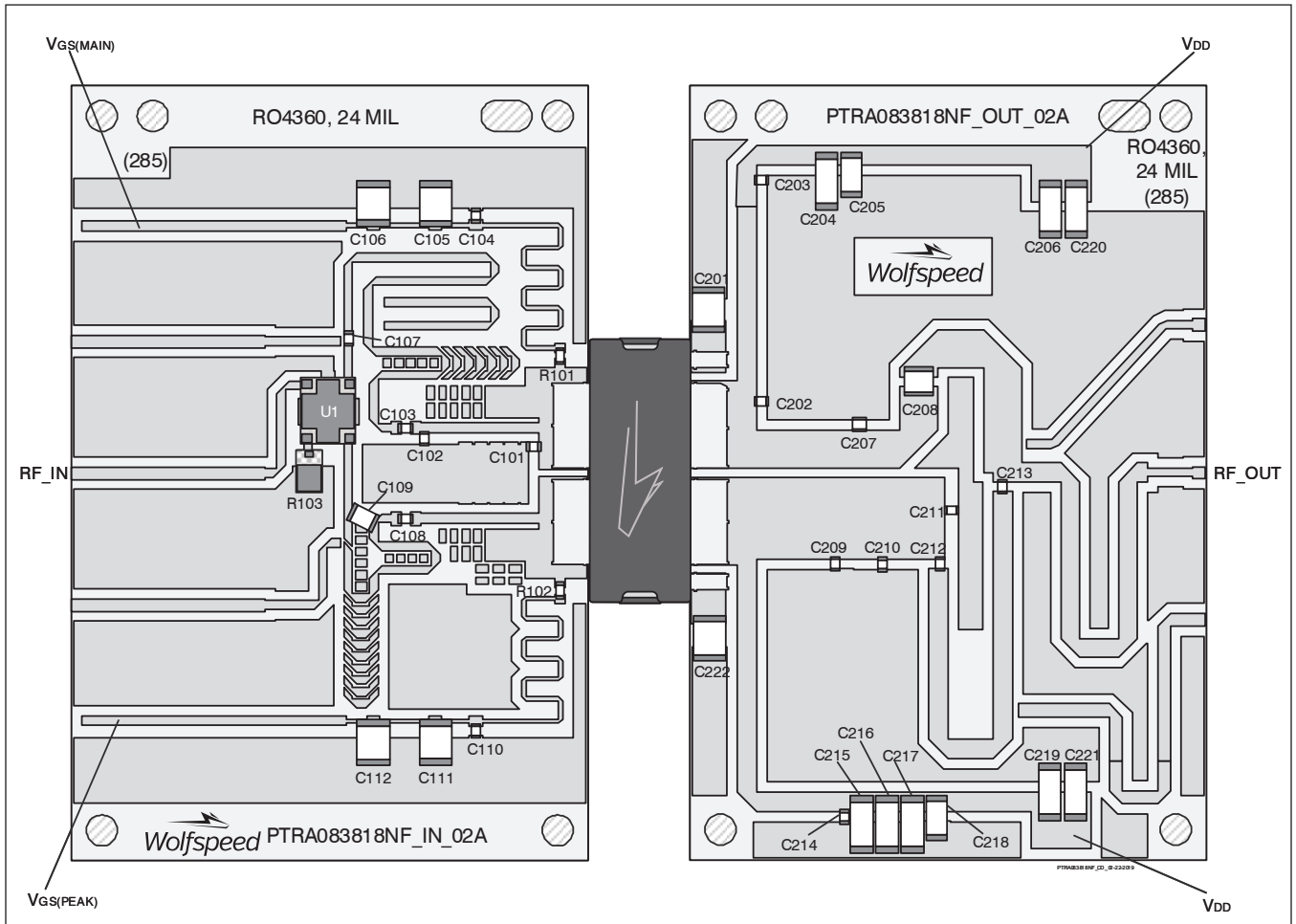
Peak Side Load Pull Performance – Pulsed CW signal: 10 μ s, 10% duty cycle, 48 V, $V_{GS(PEAK)}$ = 2.2 V, class C

		P _{1dB}									
		Max Output Power					Main Drain Efficiency				
Freq [MHz]	Z _s [Ω]	Z _l [Ω]	Gain [dB]	P _{1dB} [dBm]	P _{1dB} [W]	η D [%]	Z _l [Ω]	Gain [dB]	P _{1dB} [dBm]	P _{1dB} [W]	η D [%]
760	2.4-j4.56	1.09-j1.11	16.5	54.90	309	60.4	1.21+j0.17	18.1	52.80	192	74.3
780	2.35-j4.58	1.03-j1.17	16.9	55.00	316	62.7	0.99+j0.3	17.8	51.90	155	75.2
805	3.25-j5.53	1.05-j1.34	16.8	54.90	309	59.8	0.95+j0.07	17.9	52.00	157	74.5

		P _{3dB}									
		Max Output Power					Main Drain Efficiency				
Freq [MHz]	Z _s [Ω]	Z _l [Ω]	Gain [dB]	P _{3dB} [dBm]	P _{3dB} [W]	η D [%]	Z _l [Ω]	Gain [dB]	P _{3dB} [dBm]	P _{3dB} [W]	η D [%]
760	2.4-j4.56	1.13-j1.17	14.5	55.60	366	62.0	1.45+j0.08	16	53.80	237	75.1
780	2.35-j4.58	1.15-j1.17	14.8	55.80	377	64.0	1.19+j0.03	15.9	53.30	214	75.8
805	3.25-j5.53	1.32-j1.52	14.7	55.70	373	63.0	1.35-j0.06	15.9	53.50	222	74.5



Reference Circuit, 733 – 805 MHz



Reference circuit assembly diagram (not to scale)



Reference Circuit (cont.)

Reference Circuit Assembly

DUT	PTRA083818NF-V1
Test Fixture Part No.	LTA/PTRA083818NF-V1
PCB	Rogers 4360, 0.609 mm [0.024"] thick, 2 oz. copper, $\epsilon_r = 6.4$, $f = 733 - 805$ MHz
Find Gerber files for this test fixture on the Wolfspeed Web site at www.wolfspeed.com/RF	

Components Information

Component	Description	Manufacturer	P/N
Input			
C101	Capacitor, 10 pF	ATC	ATC800A100JT250T
C102	Capacitor, 5.6 pF	ATC	ATC800A5R6CT250T
C103, C104, C108, C110	Capacitor, 82 pF	ATC	ATC800A820JT250T
C105, C106, C111, C112	Capacitor, 2.2 μ F	TDK Corporation	C4532X7R1H225M160KA
C107	Capacitor, 20 pF	ATC	ATC800A200JT250T
C109	Capacitor, 9.1 pF	ATC	ATC100B9R1CW500XB
R101, R102	Resistor, 10 ohms	Panasonic Electronic Components	ERJ-3GEYJ100V
R103	Resistor, 50 ohms	Richardson	C8A50Z4A
U1	Hybrid Coupler	Anaren	X3C07P1-05S
Output			
C201, C222	Capacitor, 2.2 μ F	TDK Corporation	C4532X7R1H225M160KA
C202	Capacitor, 2.7 pF	ATC	ATC800A2R7CT250T
C203, C214	Capacitor, 82 pF	ATC	ATC800A820JT250T
C204, C206, C215, C216, C217, C219, C220, C221	Capacitor, 10 μ F	TDK Corporation	C5750X7S2A106M230KB
C205, C218	Capacitor, 1 μ F	TDK Corporation	C4532X7R2A105M230KA
C207, C210	Capacitor, 3.9 pF	ATC	ATC800A3R9CT250T
C208	Capacitor, 12 pF	ATC	ATC100B120JW500XB
C209	Capacitor, 5.6 pF	ATC	ATC800A5R6CT250T
C211	Capacitor, 1.2 pF	ATC	ATC800A1R2CT250T
C212	Capacitor, 6.8 pF	ATC	ATC800A6R8CT250T
C213	Capacitor, 100 pF	ATC	ATC800A101JT250T

Pinout Diagram



Package Outline Specifications

Package PG-HBSOF-6-2 (top view)

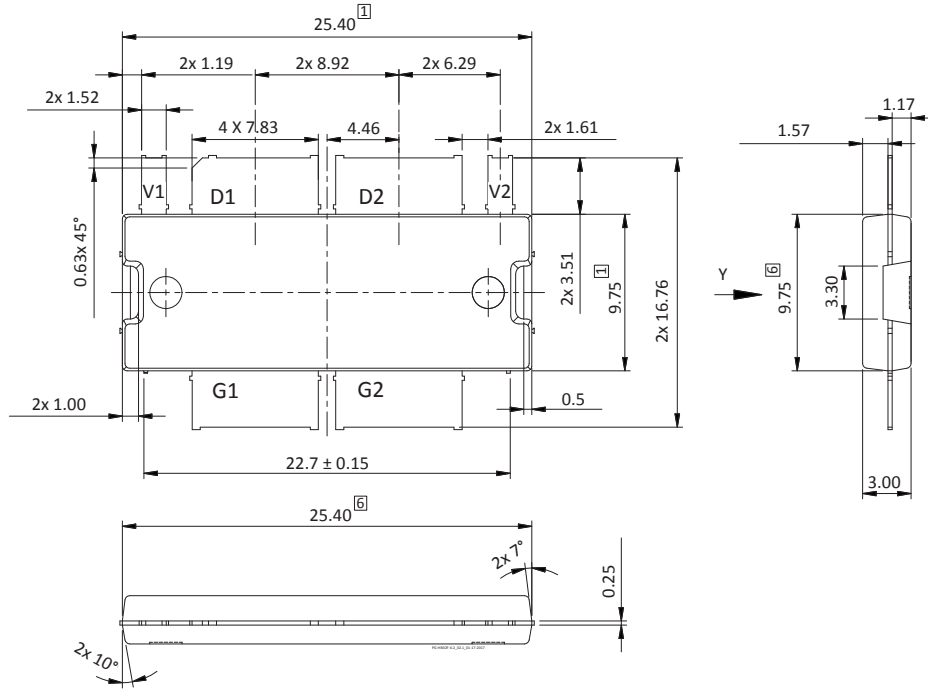


Diagram Notes—unless otherwise specified:

- 1. Mold/dam bar/metal protrusion of 0.30 mm max per side not included.
- 2. Metal protrusions are connected to source and shall not exceed 0.10 mm max.
- 3. Fillets and radii: all radii are 0.3 mm max.
- 4. Interpret dimensions and tolerances per ISO 8015.
- 5. Dimensions are mm.
- 6. Does not include mold/dam bar and metal protrusion.
- 7. Exposed metal surface is tin-plated, may not be covered by mold compound.
- 8. All tolerances ± 0.1 mm unless specified otherwise.
- 9. All metal surfaces are tin-plated, except area of cut.
- 10. Lead thickness: 0.25 mm.
- 11. Pins: D1, D2 = drain; G1, G2 = gate; S = source; V1 = drain video decoupling, no DC Bias, V2 = NC or connected to GRD

Package Outline Specifications (cont.)

Package PG-HBSOF-6-2 (bottom view)

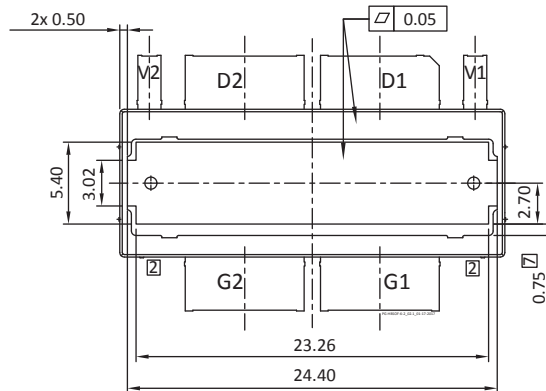


Diagram Notes—unless otherwise specified:

1. Mold/dam bar/metal protrusion of 0.30 mm max per side not included.
2. Metal protrusions are connected to source and shall not exceed 0.10 mm max.
3. Fillets and radii: all radii are 0.3 mm max.
4. Interpret dimensions and tolerances per ISO 8015.
5. Dimensions are mm.
6. Does not include mold/dam bar and metal protrusion.
7. Exposed metal surface is tin-plated, may not be covered by mold compound.
8. All tolerances ± 0.1 mm unless specified otherwise.
9. All metal surfaces are tin-plated, except area of cut.
10. Lead thickness: 0.25 mm.
11. Pins: D1, D2 = drain; G1, G2 = gate; S = source; V1 = drain video decoupling, no DC Bias, V2 = NC or connected to GRD

Revision History

Revision	Date	Data Sheet Type	Page	Subjects (major changes since last revision)
01	2016-05-04	Advance	All	Data Sheet reflects advance specification for product development
02	2016-08-22	Advance	All	Revised package (3D rendering, package number and package outline)
03	2016-09-15	Advance	1, 2	Revised RF Characteristics, DC Characteristics
04	2016-12-21	Production	All	Data Sheet reflects released product specification
05	2017-02-01	Production	2 8, 9	Updated Thermal Characteristics, Maximum Ratings Updated Package Outline
05.1	2017-03-30	Production	1 3, 4	Updated RF Characteristics table to include OPAR Fixed missing labels on CW performance graphs
06	2018-06-20	Production	All	Converted to Wolfspeed Data Sheet, revised reference circuit (output)
06.1	2019-02-22	Production	2	Added MSL table

For more information, please contact:

4600 Silicon Drive
Durham, North Carolina, USA 27703
www.wolfspeed.com/RF

Sales Contact
RFSales@wolfspeed.com

RF Product Marketing Contact
RFMarketing@wolfspeed.com
919.407.7816

Notes

Disclaimer

Specifications are subject to change without notice. Cree, Inc. believes the information contained within this data sheet to be accurate and reliable. However, no responsibility is assumed by Cree for any infringement of patents or other rights of third parties which may result from its use. No license is granted by implication or otherwise under any patent or patent rights of Cree. Cree makes no warranty, representation or guarantee regarding the suitability of its products for any particular purpose. "Typical" parameters are the average values expected by Cree in large quantities and are provided for information purposes only. These values can and do vary in different applications and actual performance can vary over time. All operating parameters should be validated by customer's technical experts for each application. Cree products are not designed, intended or authorized for use as components in applications intended for surgical implant into the body or to support or sustain life, in applications in which the failure of the Cree product could result in personal injury or death or in applications for planning, construction, maintenance or direct operation of a nuclear facility.